

NEW MEXICO LAND CONSERVANCY

Conserving Land. Preserving Heritage



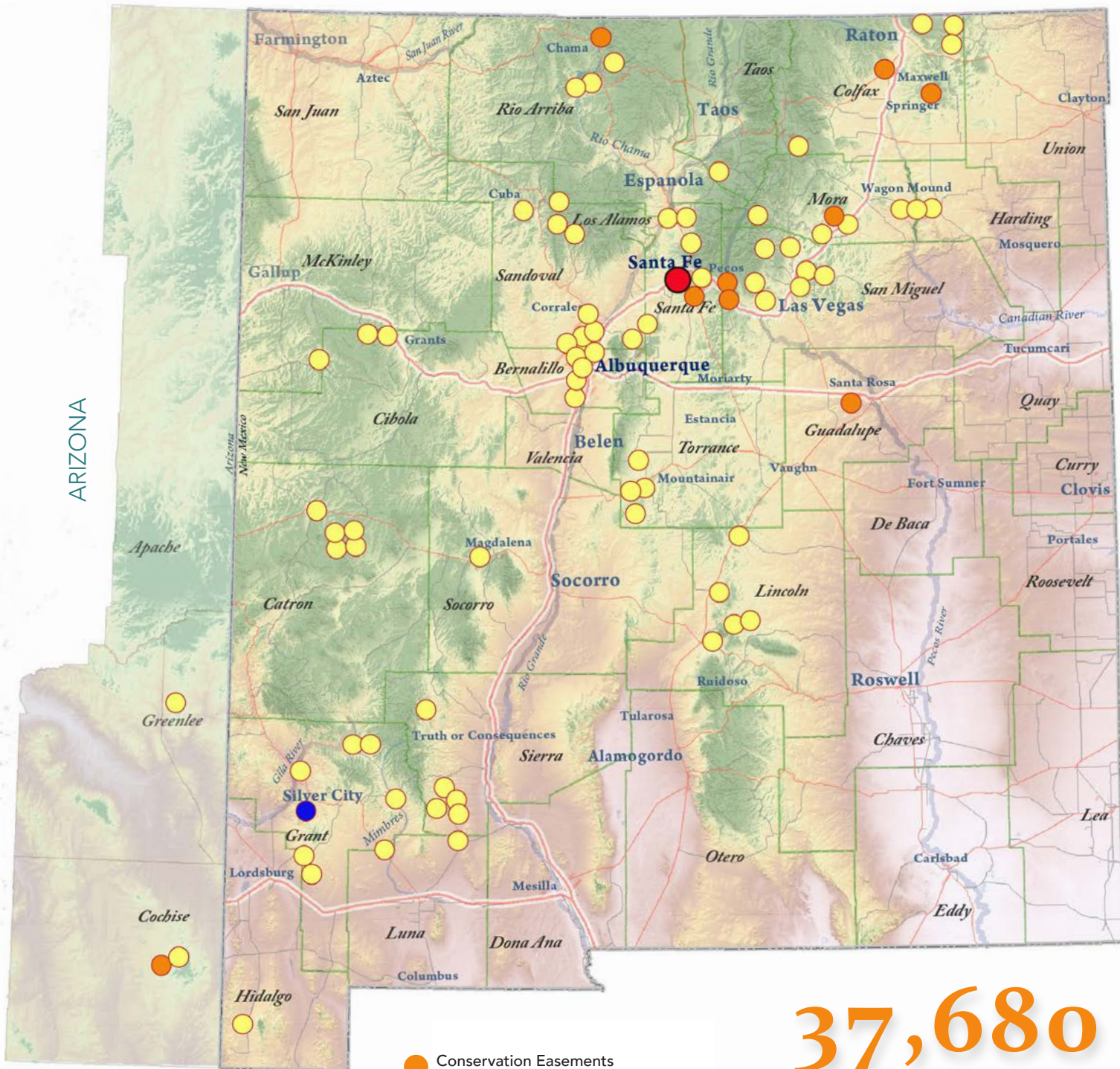
ANNUAL REPORT
2018

A Great Year for Land Conservation!

2018

214,184 total !
acres !

Conserved Across New Mexico & Southeast Arizona!



9 new easements this year!

- Conservation Easements Completed in 2018
- Existing Conservation Easements
- NMLC Headquarters
- Southern New Mexico Office

37,680
acres

Additional acres conserved in 2018

A Great Year for Conservation!

Dear Friends,

2018 has been a great year for land conservation in New Mexico – and a great year for NMLC as well.

All things considered – the number of easements completed, acres conserved, revenue generated, new board members recruited and new projects initiated by staff working full-out at their professional best – 2018 has been one of NMLC's best years yet!

In 2018 we completed a record number of nine easements, conserving 37,680 acres and pushing our grand total from 175,000 acres to well over the 200,000 mark (see map on left). And we have lined up an impressive number of new projects for 2019!

Having completed our 15th-year anniversary the year prior, 2018 was a year to catch our breath (for a moment!) and take stock of where we are and where we want to be in the next five, 10, and 25 years.

In 2018, staff and board developed and finalized NMLC's 5-year strategic plan for 2019-2024. Our mission and strategic goals have been honed over the years into a clear set of priorities whose relevance has only increased with the changing economic and climate conditions in our arid and underfunded southwestern state. We've included highlights of this plan on the next few pages.

This year was also the end of the first 5-year term of our professional accreditation from the Land Trust Alliance, and in 2019 we embark on the rigorous adventure of renewing our accreditation for the next five years – a process that promises to be comprehensive in scope and scrutinizing in detail. We are confident that our experience, integrity, professionalism and hard work will lead us to a successful conclusion and leave us in better shape than before as an organization moving forward.

This year we completed another "clean" audit and, thanks to a generous planned gift, paid off all of our remaining debt. We then reinvested the monthly amount we were spending on loan repayment back into our Petchesky Conservation Center for a partial new roof, new stucco and other necessary, deferred maintenance. Our easement portfolio is growing, our financial position looks strong and our building looks great. I'd like to think that Jane Petchesky would be smiling down on us from above.

In 2018, we also developed a completely new website – a complex and clarifying process – which helped us focus our message even further as we expand our efforts throughout this geographically large state. Now we are in the process of making a new film that will highlight some



of the work we've accomplished around the state with our visionary landowners and why private land conservation is so important, relevant and timely.

As I reflect back over the year, I am filled with pride and deep appreciation for our small staff and board, and all that we've accomplished. New Mexico is a big state with a lot of proverbial ground to cover. I am fortunate to be director of such a fine group of individuals who worked together seamlessly this year, each volunteering to help one another despite the volume of work of their own plates. This past year we had some fun, too. We made time for a brief staff retreat down in Silver City at the Bear Mountain Lodge last summer, to explore our past and present – what worked, what didn't work so well – and to brainstorm our own future as an organization and what we want the future of conservation in New Mexico and the Southwest to look like.

We've set our sights high for that future: we ultimately want to conserve one million acres in the Southwest – a goal that represents more than just a number. One million acres says to us that we are thinking big and that we're going to stay actively focused on our core mission – protecting and conserving land – and not just rest on our laurels. It is also our way of saying that we believe we're up to the challenge. It's an ambitious goal to be sure – if things go as anticipated in 2019, we may top the 300,000-acre mark. But we believe in ourselves, our ability to move ever-closer to this significant benchmark for one reason . . . because of our love for New Mexico – its water, wildlife, working lands and wide open-spaces.

For the land,

Scott Wilber

—Scott Wilber Executive Director

5-year strategic plan

Our mission and strategic goals have been honed over the years into a clear set of priorities whose relevance has only increased with the changing economic and climate conditions in our arid and underfunded southwestern state.

Who we are

The New Mexico Land Conservancy (NMLC) is an accredited, statewide, non-profit land trust and conservation leader in New Mexico and the Southwest, making significant contributions to the conservation, health and resilience of land, water and associated natural and cultural resources throughout New Mexico and the surrounding region.

Our Mission

To preserve New Mexico's land heritage by helping people conserve the places they love.

Our Vision

1,000,000

Water ♦ Wildlife ♦ Working Lands ♦ Wide Open Spaces

WATER

Helping ensure that our **watersheds** remain whole and healthy – filtering and replenishing – and that precious, life-giving rivers, streams, and other water flows are protected.

WILDLIFE

Helping protect the land, natural **habitat** and **migratory corridors** that wildlife depends on. After all, wildlife and nature, in general, don't recognize property lines!

WORKING LANDS

Helping ranchers and farmers and their families keep their properties intact and their **heritage** preserved, providing food and protecting New Mexico's **open space** and scenic vistas for public enjoyment.

Strategic Planning Process in FY18.

Our 5-year strategic plan was developed as the result of an evaluation of the previous strategic plan and its measurable results; an organizational needs assessment including internal and external stakeholder interviews; a Board retreat and a staff retreat that all occurred in FY18. Our strategic plan will be used to guide NMLC's operations over the next five years: 2019 – 2024. #

Where we are today | Overview

Having completed our 16th year, NMLC is an established and seasoned land trust – working statewide and in portions of southeastern Arizona. Our mission and strategic goals have been honed over the years into a clear set of priorities whose relevance has only increased with the changing economic and climate conditions in this arid and underfunded southwestern state.

As a land trust, we wish to remain true to our mission and basic approach: pro-active in land conservation where it counts – *on the ground*. Nearly 80% of our operating income currently comes from landowner contributions and project-related grants.

During our formative years, most of our projects were opportunistic – they came to us either directly from the landowner or indirectly through other channels and referrals. In the last five years, however, we have increasingly been taking specific steps toward a more targeted/strategic approach through conservation/private-landowner research, expanded marketing and outreach efforts.

At present, our staff of six is working at capacity. As a small organization covering a large territory, we are at that challenging juncture of needing more staff but needing more resources to afford and retain them. Combined with this, we are in an expansion mode in terms of organizational development and sophistication, including:

- ♦ Working actively in all four geographic quadrants of the state as well as southeast Arizona. As a result of the expanding work in southern New Mexico and southeast Arizona, we hired a Southern New Mexico Project Manager and opened a satellite office in Silver City, supported administratively by the home (main) office. As a result of expanding work around the state, we may consider opening additional satellite offices as opportunities and resources permit.
- ♦ Working on several publicly funded projects – including with U.S. Natural Resources Conservation Service, U.S. Fish & Wildlife Service and U.S. Army /White Sands Missile Range – which require a whole new level of reporting and accounting than we have experienced in the past and which are not necessarily just single-client projects (rather, they involve working with multiple landowners and easements).
- ♦ Exploring opportunities to make NMLC's headquarters and associated land in Santa Fe into more of a community resource by expanding trails, providing outdoor educational opportunities to student groups and programs for the general public, and offering a venue (potentially on a fee-basis) for meetings and special events.
- ♦ This fiscal year (2019) we are preparing to renew our 5-year accreditation through the Land Trust Accreditation Commission (LTAC) through 2024 – a labor intensive process that may require further organizational development in order to meet the requirements. #

Continued next 2 pages . . .

Our Core Values

Excellence ♦ Integrity ♦ Stewardship ♦ Permanence

These core values inform and direct all aspects of our work. We strive to earn and maintain respect and trust from our landowners, our partners, financial supporters, conservation leaders, agricultural producers, and other key stakeholders. We meet our responsibility of permanence of the conserved land that has been entrusted to our care by providing regular monitoring and careful management of our easements and our resources.

Excellence: We provide high quality, professional, responsive, innovative and transparent service. We are dedicated, enthusiastic and energetic about our work, ensuring all people feel welcome. We seek to build lasting relationships, trust and loyalty with our landowners, donors and supporters through attentive, accurate, timely, courteous and gracious behavior while providing them with an experience that is valuable, meaningful, enjoyable and memorable.

Integrity: We demonstrate the highest levels of honesty, integrity and quality in all forms of our negotiations, communications, education and interactions with all people.

Stewardship: We meet our responsibilities of authenticity, preservation and protection of the conserved land that has been entrusted to our care by providing regular monitoring and careful management of our easements and resources. This includes accurate documentation, transparency, and legal, social and ethical care for present and future generations.

Sustainability (Permanence): We ensure the permanence of the lands we have helped conserve by monitoring and legally defending our easements, stewarding our donors, developing permanent sources of funds, and managing our resources well and investing in the future. #

The Importance of Private Lands

Although we possess an abundance of public lands, almost half the state’s 77 million acres are privately owned. Much of the wildlife habitat, water and glorious open space in New Mexico are in private ownership. Privately owned working lands, especially, play an essential role by providing much food, fiber, water and open space upon which we depend for healthy lives and economies in the Southwest.

At NMLC, land conservation is the priority. As the only statewide land trust, NMLC is uniquely positioned to effectively work with landowners and successfully deliver meaningful and permanent land conservation that will benefit the landowner and the general public for many generations to come.

This legacy of land conservation is real and measurable with respect to conservation of water, preservation of agricultural lands, protections of wildlife habitat and other important conservation values including cultural, historical and recreational resources. We’re thinking big, with an overarching goal to:

CONSERVE ONE MILLION ACRES!

To achieve this meaningful benchmark, NMLC strategically focuses on three main strategic goals:

CONSERVATION ♦ EDUCATION
CAPACITY BUILDING

Our Strategic Goals



1

CONSERVATION

Goal #1: CONSERVATION—Protect, conserve and ensure excellent stewardship for land, water, natural and cultural resources that are significant to New Mexico and the Southwest.

This goal will be accomplished through:

- ◆ Strategic and innovative land protection
- ◆ Excellent due diligence and stewardship
- ◆ Strong landowner relationships
- ◆ Strong local, state and national partnerships
- ◆ Deeper community engagement
- ◆ Community-based satellite offices
- ◆ State-wide and local advisors

NMLC will invest in high-priority landscapes, watersheds and communities to increase the pace, quality, quantity and permanence of land and water conservation in New Mexico.

EDUCATION

Goal #2: EDUCATION (Communications & Outreach)—Increase awareness of conservation methods and benefits; and public appreciation for the importance/value of our land, water and associated resources, and the need for their protection and conservation.

This goal will be accomplished through:

- ◆ Publications, website, film, social media
- ◆ Outreach to key stakeholders
- ◆ Increased public use and programs at NMLC Headquarters
- ◆ Educational tours of conserved properties
- ◆ Ranch tours and agricultural demonstration projects
- ◆ Community-based satellite offices
- ◆ Supporting increased outdoor recreational opportunities on conserved properties (hiking, biking, hunting, fishing, birdwatching, photography)

NMLC will invest in educating landowners about conservation easements and the associated benefits, and educating New Mexicans about the important connection between the land/water and our quality of life in order to ensure continued public support for conservation.

3

CAPACITY

Goal #3: CAPACITY—Build and sustain NMLC as a viable, efficient and financially stable conservation organization; and increase capacity and support for conservation in New Mexico and the Southwest.

This goal will be accomplished through:

- ◆ Strategic fundraising including planned giving
- ◆ Board and staff development
- ◆ Internal policy development
- ◆ Professional accreditation
- ◆ Workshops and training
- ◆ Outreach, external policy development and collaboration with partners and key stakeholders

NMLC will invest in its own organizational development to ensure that it can fulfill the promise of permanence of land conservation and will also strive to serve as a catalyst and collaborate with other key stakeholders to promote and achieve greater conservation outcomes at state and regional levels.

2

Organizational Strengths

Who we are & What we do well

Reputation and Connections

16 years of solid experience and an excellent performance track record. NMLC is well known and respected in many circles including conservation organizations, state and national agencies, legislators, foundations and other funding sources, and landowners.

Leadership Role and Performance in Land Conservation

The only land trust that provides service for the entire state of New Mexico and portions of southeast Arizona. More than 80 completed conservation projects permanently protecting 214,000 acres of high-conservation value land involving active outreach and cultivation, timely follow-up, thorough due diligence and solid documentation.

Expertise and Professionalism

We provide accurate, timely and up-to-date information to our landowners and partners; and are diligent throughout the complex conservation-easement process, as evidenced by no complaints or lawsuits.

Proactive. Responsive.
Always.

Full service

We “do it all” and provide a full-service package to our landowners and clients including landowner cultivation, due diligence, baseline documentation and environmental assessment, easement negotiation and drafting, commissioning appraisals, filing for state tax credits.

Tenacity/Persistence

We get the deals done! We also seek out and navigate through various, competitive government application processes to bring as much funding and/or tax benefit as possible to qualifying projects.

Stewardship

Our annual monitoring and long-term relationships with our landowners are exemplary, as evidenced by landowner feedback, cooperation and support ... and no major violations since our inception. #

Located so close to Santa Fe, this property was a prime target for potential subdivision for residential development. We are grateful to the landowner for choosing to work with NMLC on conserving this spectacular Pecos River property.



Above: The Pecos River. Photos by Connor Jandreau

Conservation Where the Rivers Flow . . .

2018 was a great year for land conservation on privately owned river properties. NMLC completed three new projects – two along the Pecos River and one on the Chama – that collectively demonstrate the wide scope of benefits to be realized through conservation easements.

Pecos River Property

AT THE HEART OF IT

By year's end, NMLC completed the first of two conservation easements on a small but highly valued 161-acre property along the main stem of the upper Pecos River.

Nestled within the large protected area of the Pecos National Historic Park, the property represents a valuable opportunity to strengthen the conservation of the upper Pecos watershed and the integrity of existing protected areas including the Park, the Pecos National Monument, the Santa Fe National Forest, and nearby Forked Lightning Ranch.

81
acres conserved!

This first easement of 81 acres is bounded on three sides by the Pecos National Historic Park and includes a nearly one-half mile reach of the mainstem Pecos River and the adjacent open-terraced floodplains and riparian expanse. The property is rich in cultural and historic resources as well, including petroglyphs and a historic Spanish-era acequia.

The landowner, Garrett Thornburg, has been active in improving wildlife habitat – terrestrial and aquatic – on the property, which is used primarily as a retreat for the landowner and his family and friends.

Located so close to Santa Fe, this property was a prime target for potential subdivision for residential development. We are grateful to the landowner for choosing to work with NMLC on conserving this choice Pecos River property.

Forked Lightning Ranch

ONE FOR ALL

In the same Pecos watershed, NMLC completed a new easement in 2018 to extend protection over the entire Forked Lightning Ranch near Rowe, NM, adding 403 new acres for a total of 2,229 acres now conserved.

Forked Lightning is a conservationist's dream – a haven for wildlife, with nearly four miles of the Pecos River running through it, and home to several historic sites on the property. This new easement combines two previous easements

403
acres conserved!

along with the additional new acreage into a single easement, and thereby preserves the integrity of the property by removing the potential for selling off portions of the ranch in the future – a real win-win for land conservation. A special thanks to the landowners, Scott and Kimberley Sheffield, for protecting the remainder of this beautiful property.

Trout Stalker Ranch

QUE VIVA EL RIO CHAMA!

Meanwhile, further up north, Dan and Ashlyn Perry, owners of the Trout Stalker Ranch, "stitched" together two of their existing conservation easements and added another 250 new acres, creating one easement of roughly 1,000 acres of prime agricultural and riparian upland habitat right in the heart of the village of Chama.

250
acres conserved!

This expanded easement includes almost two miles of the Chama River corridor and secures several hundred acre-feet of water rights which are now permanently tied to the land, protecting the future agricultural values and the habitat along both the Rio Chamita and Rio Chama rivers. We're excited to be working with these landowners as they continue to develop a conservation legacy in northern New Mexico.

Don't miss NMLC's short film completed in 2018 about the Trout Stalker Ranch, which can be found on our website under "Stories" at www.nmlandconservancy.org.



Right: Yellow headed Blackbird. Photo courtesy of Dan Perry.

Glorious Open Space



Glorieta Mesa Ranch

Located just south of Santa Fe, NM, the Glorieta Mesa Ranch borders the Santa Fe National Forest in the southern Sangre de Cristo Mountains, west of the Pecos River Valley. In October, NMLC recorded a conservation easement on 396 choice acres of the ranch, thereby preserving some exceptionally scenic open space in the region. The property has several ephemeral drainages as well as a natural spring with intermittent flows. The land is currently being leased for livestock grazing and the owner enjoys the property as a get-away and for horseback riding. This close to Santa Fe, where residential development pressure is increasing in this area as baby boomer retirees seek recreational retreats outside the city, this easement may not be that large in size, but it's mighty when it comes to the beauty and natural habitat it conserves.

396
acres conserved!

Cara Madre Ranch

Brooke Gamble named her ranch Cara Madre – “mother’s face” in Spanish – in honor of her mother, Betty Gamble, who made the purchase of the property near Santa Rosa, NM possible.

“My mother was a conservationist and loved nature,” Brooke explained. “Years ago, she said to me, rather than leave money when I die it would be wonderful if you can find a piece of land to buy, to enjoy now and to preserve for future generations.”

In 2000, after three years of actively searching throughout the state, Brooke found the right place – nearly 5,200 acres of deeded land in Guadalupe County southwest of Santa Rosa, NM.

“It’s a magical place – a mini Grand Canyon tucked away amidst the plains of eastern New Mexico,” Brooke said.

In 2018, NMLC completed the conservation easement over the entire property, which includes limited agricultural use of portions of the property, with grazing management requirements spelled out clearly at Brooke’s request.

“Although the tax benefits are a very nice perk,” Brooke acknowledged, “the reason [for the easement] was solely to preserve, in whole, a beautiful piece of land – for wildlife, for the environment, and for future inhabitants of this world. Nothing moves me more than the natural world,” she added, “so how great to be able to keep this little piece healthy and intact.”

The property is rich with history and home to a host of wildlife species. Playas onsite provide a critical resource for wildlife when wet, including loafing habitats for migrating and wintering waterfowl.

(See full story in our Fall 2018 print newsletter, available on our website under “Media” at www.nmlandconservancy.org.)

5,140
acres conserved!



Northeast Grasslands

—Keeping this last-remaining unfragmented prairie intact is critical to preserving New Mexico’s land heritage and ecological health

As part of our ongoing strategic planning, NMLC has identified the montane and grassland ecosystems of northeastern New Mexico, including the major watersheds along the front range of the Sangre de Cristo Mountains, as a priority conservation area.

In 2018, NMLC completed easements on three key ranches in the northeast, conserving an additional 16,795 acres of this important transition area between the mountains and the shortgrass prairie.

Conservation efforts in general throughout the state tended to neglect the northeast grasslands, perhaps from lack of appreciation for the significance of this vast, at first glance “mono-terrain.” But this ecosystem is much richer than just the important open space visible from the highway; it is one that supports a wide array of wildlife and waterfowl habitat – and constitutes a critical watershed for

much of the state’s populated areas downstream. Keeping this landscape unfragmented, protecting the river corridors, buffering wildlife refuges, and creating a mosaic of protected public and private lands are essential to ensuring adequate habitat and corridors to sustain viable wildlife populations. Riparian habitat and seasonal playalakes, in particular, are crucial to providing wetland habitat for resident and migrating birds. The primary threats to the integrity of this landscape are the subdivision of large ranches into smaller ranches or ranchettes and recreational retreats for people from regional urban centers; along with increasing development of wind energy and the associated transmission lines. Conserving this last-remaining unfragmented prairie is critical to preserving New Mexico’s land heritage and ecological health. #

Stories to follow, next few pages . . .



NMLC and its partners have embarked on a long-term strategic conservation initiative in the Northeast Grasslands of New Mexico, **one ranch at a time.**

As the ranching community begins to warm to the win-win of conservation easements, we have witnessed our efforts ramping up as more partners realize the values of preserving the integrity of this expansive, intact grassland and the rural ranching way-of-life that is often associated with it.

Following are three easement projects NMLC completed in the northeast region in 2018.

CS Ranch | A Succession Success Story

In December 2018, NMLC proudly and gratefully completed its first easement project on the legacy CS Ranch in northeastern New Mexico, conserving 8,435 acres of NRCS-designated “Grasslands of Special Significance” [GSS].

“The conversation about conservation easements as a general concept began almost 15 years ago,” said Julia Davis Stafford, one of six siblings who represent the 4th generation of ownership of this iconic ranch, which was founded in 1873. A combination of estate planning and long-term land management goals ultimately led to the decision to move forward with the easement, which took nearly two years all told to complete.

“The timing was finally right,” added Kimberly Barmann, another of the sibling owners. “The NRCS funding as a result of the GSS designation was a big factor as well.”

The NRCS funding and tax benefits of the easement enabled the Davis family to fulfill an important aspect of their succession plan by making it possible to consolidate shareholder holdings and reduce debt, thereby keeping the ranch itself whole and in the family.

“There are six of us in this generation and the ranch is in all of our hearts – we were raised on and worked together on the ranch,” Julia said, “We’re part of

—A Legacy Ranch Reaps the Benefits of Conservation Easements

that legacy, and we all share a deep commitment to the family and the land – and to passing on the land to the next generation in better shape than we got it.”

The 110,000-acre ranch is still a working cattle ranch and continues to have a significant impact on the ranching community and rural economy in northeast New Mexico.

“The ranch is a lot of shortgrass prairie land in very good shape,” Kimberly said. “We’ve been practicing Holistic Management grazing planning since the ‘80s.” The ranch is rich, too, with wildlife – big game, birds, and small and large mammals – and a number of rivers run through the property which extends up into the piñon-juniper foot hills.

“We’re traditionally a cow-calf operation, and our hunting business is now a very important part of our overall operation,” Kimberly explains. “And for the next generation, who knows where it will go! The next group coming along has always been in our thinking.” A specialized grassfed beef operation and tourism opportunities on the ranch are among the possibilities.

To have such a high-profile ranch family give the nod to a conservation easement, gives added support to NMLC’s strategy in the northeast where conservation appears to have a bright future within the ranching community.

Julia added: “I want to say how much we appreciated NMLC. Connor [Jandreau] and Scott [Wilber] have been wonderful to deal with. It’s been a very long and complex process – pretty daunting for a landowner to tackle on their own – and they shepherded us through; their expertise and professionalism have been great.” #

Family photos courtesy of CS Ranch: (Top:) Linda Mitchell Davis (mother) on her good sorrell, “Chance.” (Below:) The CS Ranch Family.



8,435
acres conserved!

Taylor Springs Ranch

If it worked well before, why not do it again!

Landowner rancher Greg Moore has worked with NMLC over the years to place his entire 23,000 deeded-acre Wagon Mound Ranch in northeast New Mexico under conservation easement. In December of 2018, NMLC completed the first of two easement phases on Greg's second property, Taylor Springs Ranch, located near Springer, NM.

Taylor Springs Ranch has earned the designation of "Grasslands of Special Environmental Significance" (GSS) by the Natural Resources Conservation Service (NRCS) and will contribute nearly 10,600 conserved acres when the project is completed to help keep this important shortgrass prairie and watershed region intact and free from development. The first easement phase, completed in December 2018, encompassed 4,560 acres and the second phase will add the ranch's remaining acres to the easement and be completed in 2019.

Greg Moore, whose ties to the land go back to the 1970s, shows a deep commitment to the preservation of ranching in New Mexico, and the corresponding stewardship of the land and water resources under his care.

—Continuing the Conservation Momentum in the Northeast

Greg sees the private and public benefits of conservation easements. They have been a key component in his succession planning as a way to reduce the estate tax liability for his children so they can keep the ranch upon his death. He also appreciates the role easements play in helping protect the substantial investment of time and dollars in restoration work and good land management practices he has implemented on his properties throughout the years.

Greg is also keenly aware of the important role that his private land conservation plays in the greater shortgrass prairie landscape. More than 30 waterbodies, for example – including a critical regional playa being restored to its key function as a recharge basin – are distributed across the Taylor Springs Ranch, providing important stop-over and wintering habitats and rich feeding areas for breeding waterfowl, among their many other benefits.

4,560
acres conserved!

Taylor Springs Ranch is located just 15 miles south and east of CS Ranch, which completed its first conservation easement in 2018, and represents an important continuation of the efforts in the northeast to build on the momentum that NMLC and its partners have created to conserve prime grassland for ranching, wildlife and species recovery. #

Fort Union Ranch

Just north of the quiet community of Watrous lies another integral partner in our strategic endeavor to protect the northeast grasslands and the significant Rio Mora watershed. The Fort Union Ranch stretches for miles across the horizon from the Rio Mora to the Ponderosa pine and Douglas fir forests of the Turkey Mountains. The mix of grasslands, wetlands and higher elevational forest provides habitat for a variety of wildlife including pronghorn antelope, elk, deer, black bear, mountain lion and wild turkey.

3,800
acres conserved!

NMLC began assisting the owners of the ranch – the Union Land & Grazing Company – in 2014, using conservation easements as a tool to protect what remains of this iconic ranch which has remained in the ownership of the descendants of the original owner, General Benjamin Butler, since shortly after the Civil War. The ranch completely surrounds and provides the uninterrupted view-shed for the Ft. Union National Monument, which was a convergence point for the various traces of the designated historic Santa Fe Trail which criss-cross the 95,000-acre ranch.

Proceeds from the sale of state tax credits (from easements) have helped create a regular stream of revenue to equip managers with resources to implement the recommendations for improved land and resource stewardship originating from a

Story continued next page . . .

Left: Fort Union Ranch. Below: Greg Moore, Taylor Springs Ranch owner (left) talks with Joshua Miner, Resource Manager of the nearby Fort Union Ranch, (right) during the US Fish & Wildlife's black-footed ferret release on Greg's Wagon Mound Ranch in September 2018.



Fort Union Ranch . . . (cont.)

(Story continued from previous page . . .)

plan prepared by the Sonora Institute. In 2017, Fort Union Ranch hired a new holistic land manager in an effort to improve the sustainability of their cattle operation, and also turned to hunting, low-impact tourism and conservation as alternative land-uses to diversify operations across the ranch.

By the end of 2017, Fort Union Ranch had placed more than 10,000 acres under easement in four phases. In 2018, another 3,800 acres were added – increasing the ranch’s protected land to a grand total of 14,020 acres now under conservation easement, representing 15% of the ranch’s total acreage. This continues the protection of view-shed along I-25 on both sides and helps buffer the National Monument, and includes the lowest reaches of Dog and Wolf creeks, both important tributaries of the Rio Mora.

Also, in 2018, NMLC was awarded a \$100,000 grant from U.S. Fish & Wildlife Service through the North American Wetlands Conservation Act (NAWCA) which will see the protection in 2019 of critical waterfowl loafing and migration habitats on Dry and Wheeler Lakes, and the remaining reach of Wolf Creek, which will be placed under easement on Fort Union Ranch, with in-stream restoration coordinated by the Hermit's Peak Watershed Alliance to bring the riparian corridor back to full-function (see NAWCA sidebar story, righthand page.)

Fort Union Ranch is building a strong conservation legacy beyond its own borders as it evolves into a leadership role among land stewards in New Mexico and the West. NMLC is proud to be a partner in this work to conserve one of the most important vestiges of native shortgrass prairie in North America. #



NAWCA

New Mexico Awarded a Wetlands Grant!

In 2018, New Mexico Land Conservancy received a North American Wetlands Conservation Act (NAWCA) grant to restore and preserve more than 3,500 acres of land in the heart of the southern shortgrass prairie in northeastern New Mexico. Now in its 30th year, the NAWCA matching grant program, administered by the U.S. Fish and Wildlife Service (USFWS), helps migratory birds and other wetland wildlife in the United States, Mexico and Canada.

As an arid state in the Southwest, New Mexico isn’t usually the first place that comes to mind for a wetlands grant – which is one of the reasons this grant is so significant.

The southern shortgrass prairie of northern New Mexico represents one of the last remaining intact, landscape-scale grasslands left in North America – critical habitat for grassland birds, many of whose species have declined more than 70 percent since the 1950s. A complex of seasonal playa lakes scattered across this landscape also serve as essential stopover habitat for birds as they migrate between breeding and wintering grounds.

“That’s all the more important because of the scarce water resources within the region,” said NMLC conservation project manager, Connor Jandreau, who spearheaded the grant, working with USFWS and five partners: Union Land and Grazing Company (Fort Union Ranch), Hermit’s Peak Watershed Alliance, Ducks Unlimited, Rio Grande Return, and the Playa Lakes Joint Venture/Conoco Philips.

“We have an opportunity working with ranchers and others in this region who recognize the importance of this habitat and their role as stewards, and who are willing to support through matching funds and volunteer hours to help get conservation dollars on the ground,” Jandreau added.

The project work will begin in 2019 with a conservation easement on the Fort Union Ranch. NMLC wishes to thank the landowner, the volunteers and the partners who helped bring these needed federal conservation dollars to our state’s precious wetlands. #



Eastern Meadowlark | Photo Courtesy of Mark Watson

Meanwhile, down south and west . . .

Cienega Ranch | Building a Conservation Legacy in Southeast Arizona

Placing properties under a conservation easement is always a satisfying feeling knowing that our children and grandchildren will also get to experience the relatively unaltered landscape and associated scenic vistas,

Josiah's vision and 25 years of conservation efforts on the Cienega Ranch include not only the purchase of adjacent property to increase the amount of unfragmented lands, but also include removal of fences, extensive watershed restoration, reintroduction of native species, improved soil and plant health through a "lighter footprint" of grazing rotation and long periods of pasture rest, as well as the dispersal of water drinkers across the ranch for both livestock and wildlife. Josiah is constantly working on the full suite of conservation measures across his ranch.

13,200
acres conserved!

In 2018, New Mexico Land Conservancy (NMLC) in conjunction with The Trust for Public Land (TPL) worked with Josiah to complete a conservation easement across 13,200 acres of the Dos Cabezas Mountains in the Sky Island Region. This is in addition to 6,043 acres NMLC and TPL placed under a conservation easement in 2017 on the Cienega Ranch.

Now these 19,243 acres will be permanently protected from subdivision and development and will remain open grasslands, including the 31 land parcels and the 56 lots slated for development that Josiah was able to reassemble into the integrity of a viable working ranch. Stay tuned for Josiah's next conservation successes in this important landscape. #

cultural resources, agriculture, and wildlife values that go along with that protection. It is even more satisfying when a landowner like **Josiah Austin** of the Cienega Ranch, expands the size of that conservation footprint by reinvesting the proceeds from the sale of his conservation easement back into the purchase of adjacent lands.

Silver City Trails & Open Space | Update

What began two years ago with a initial grant from the LOR Foundation awarded to, and implemented by, NMLC to elevate Trails and Open Space planning and implementation for Silver City, has blossomed into a major effort by a wide spectrum of local agencies, nonprofits and residents' groups to continue this initiative. Current efforts are now at the county planning level – to develop a comprehensive Trails and Open Space program for the larger Grant County area within which Silver City is located. "The amount of community enthusiasm and involvement associated with this project has been amazing," said Ron Troy, NMLC's Southern NM Conservation Project Manager who wrote the initial grant and continues to be involved. "We are excited about the myriad of projects and project planning taking place and feel this is exactly the kind of momentum that LOR was hoping to generation with this grant." #



Ron Troy's wife Yvette Troy and their dog on the trail.

White Sands Missile Range

—A Full Regiment of Military Readiness and Land Conservation

NMLC is honored to have been the land trust selected to assist the Department of Defense (DoD) and White Sands Missile Range (WSMR) in their efforts to curtail encroaching development on lands adjacent to the "Range."

Under DoD's Readiness and Environmental Integration Program (REPI), NMLC and WSMR entered into a long-term contract in which NMLC is charged with working with neighboring landowners to preserve the open space surrounding WSMR. We will be working with landowners situated in the "buffer area" in the hopes of placing conservation easements across these working ranches. This is a tall order as there are approximately 850,000 acres of state and private lands within the targeted area.

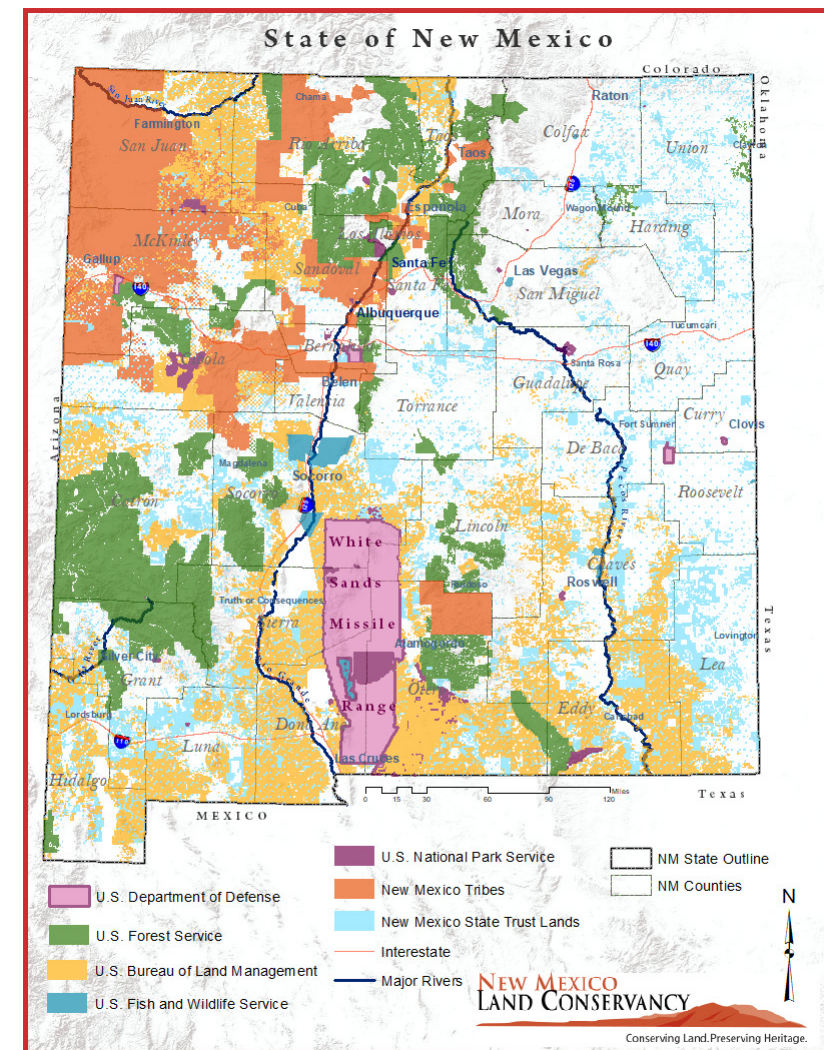
Military installations across the country, due to their vastness of unfragmented lands protected under high security and little public use, frequently represent the last refugia of numerous populations of various species of plants and animals, often including threatened and endangered species, as well.

Spanning 100 miles north and south, and 45 miles east and west, the 2 million-acre WSMR is no exception to this phenomenon. This large area of Chihuahua desert grasslands with its alkali springs and numerous mountain ranges is home to populations of pronghorn, desert

bighorn sheep, elk, bats, mule deer, non-native oryx, White Sands pupfish, and a myriad of other species. We are excited to use this unique funding source to expand this vast unfragmented area by working with neighboring landowners in the hope of acquiring conservation easements across their properties.

NMLC sees this as a valuable conservation opportunity to not only protect New Mexico's land heritage and the long list of conservation values that we normally protect – such as cultural values, agriculture, future food production, fish and wildlife habitat, watershed health, scenic vistas and valuable open space – but to also to help preserve WSMR's important military and economic role. Ongoing training and testing missions conducted at White Sands Missile Range are extremely important relative to our national security and to New Mexico's economy.

During 2018, NMLC's efforts have been focused on outreach with numerous landowners in the "buffer area" to determine their level of interest in conservation easements. We are pleased with the initial results of those efforts and are currently working with individual landowners to permanently protect nearly 25,000 acres of private land as part of this effort. #



This is a tall order as there are approximately 850,000 acres of state and private lands within the targeted area.

BOARD OF DIRECTORS | Leadership

The NMLC Board saw some changes in 2018, starting with the departure of Board Chair, Sayre Gerhart in June. We want to thank Sayre for her leadership and support during the six years she served on the Board. Sayre was replaced by Claudette Horn, previously board Secretary. Judith Suiter then assumed the role of Secretary. In September, Alan Overton, Treasurer, moved into the Vice Chair position formerly held by Lawrence Rael, and Dave Dunmar assumed the Treasurer role. Two new board members joined us in December: Walter Stern and DL Sanders. We're excited for the expertise and new perspectives they both bring to the Board. Lastly, John (Jack) McCarthy, resigned in December, having served the board since 2012. Jack will continue to support NMLC as an Advisor. We thank you, Jack for your guidance and commitment these past six years. NMLC continues to develop its board capacity, actively recruiting in 2019.



Claudette Horn, Chair
Albuquerque, NM

Claudette Horn, a native of Albuquerque, is the Senior Manager for Environmental Services at PNM Resources. She has 25 years of experience in environmental management, policy and regulatory compliance for electric and gas utility operations and construction.

As former Chair of the Albuquerque/Bernalillo County Local Emergency Planning Committee she established the non-profit status and framework for this organization. She has served on the United Way of Central New Mexico Women in Philanthropy Council. Claudette holds a Bachelor's degree in University Studies from the University of New Mexico.



Alan Overton, Vice Chair
Santa Fe, NM

Alan is a Senior Vice President and Commercial Lender with Century Bank in Santa Fe. He has more than 30 years of commercial banking experience and has worked with property owners in southwest Colorado on banking transactions involving conservation easements. His banking background, business acumen and financial experience with conservation easement transactions have proved invaluable to the stability and strength of NMLC's fiscal position. Alan has a B.A. in Business Administration & Finance from the University of Houston.



Dave Dunmar, Treasurer
Santa Fe, NM

David Dunmar grew up in Santa Fe where he has resided for nearly 50 years. He is currently a Realtor with Barker Realty dealing in commercial and residential real estate sales. Prior to that, David worked in the local banking industry for 33 years (mostly with Community Bank of Santa Fe) where he was the manager of the lending area and a member of the Senior Management Team responsible for the day to day operations of the bank. He holds a Bachelor of Arts degree from New Mexico State University and is a graduate of the Western States School of Banking. David enjoys fly-fishing, hiking, and also engages in some small-scale farming efforts in northern New Mexico.



Judith Suiter, Secretary
Sandia Park, NM

Judith Suiter is owner and President of Zephyr Design, Inc., a planning consulting firm based in Albuquerque, NM since 1988. Judith's firm specializes in planning and project permitting. She holds a B.A. in Art & Design from the University of Tennessee and a M.A. in Community and Regional Planning from the University of New Mexico and is a member of the American Society of Landscape Architects and the American Planning Association.

Judith comes to NMLC with a wealth of non-profit board and fundraising experience including serving as current chair of the Albuquerque Museum Board of Trustees. She resides in Sandia Park, NM.

BOARD OF DIRECTORS



Dale Armstrong, Board Member, Albuquerque, NM

Dale was born and raised on a ranch in Quemado, NM. Over the past three decades, he has grown TLC Plumbing & Utility from a one-man shop into one of the premier service companies in the state with more than 300 employees. He and his wife Gail have four children, four grandchildren and operate a cattle ranch in Magdalena, NM.



Cullen Hallmark, Board Member & Past Chair, Santa Fe, NM

Cullen is a partner with the law firm of Sommer, Udall, Sutin, Hardwick & Jones, P.A. He is an experienced cyclist, backpacker, river runner, cross-country skier and Master Gardener. He has been a member of The Quivira Coalition since 2000, and manages its Red Canyon Reserve in Socorro County. He holds a B.A. from St. John's College and a J.D. from the University of Texas. He served as the Chair of the NMLC Board of directors from 2014-2016.



Lawrence Rael, Board Member, Los Ranchos, NM

A native New Mexican, Lawrence has had a notable career as a public servant, beginning as the Deputy Secretary of Transportation for New Mexico and later serving on Senator Jeff Bingaman's staff in Washington, D.C. He then joined the city of Albuquerque, where he eventually assumed the role of Chief Administrative Officer. In 2002 he became the Executive Director of the Mid Region Council of Governments – a regional transportation planning and economic development organization in central New Mexico. In 2012 Lawrence became the State Executive Director for the U.S. Department of Agriculture's Farm Services Agency for New Mexico, appointed by former President Barack Obama. Lawrence holds a B.A. in Sociology and an M.A. in Public Administration from the University of New Mexico.



DL Sanders, Board Member, Santa Fe, NM

DL Sanders has practiced water law in the state and federal courts of New Mexico since 1990. He has been a member of bar for the United States 10th Circuit Court of Appeals and has been admitted and qualified as an Attorney and Counselor of the United States Supreme Court. From 2001-2014, he served as Chief Counsel to the New Mexico State Engineer providing legal counsel and supervising all litigation related to or arising from the statutory duties of the state engineer. DL was appointed by the Governor to the Western States Water Counsel (WSWC) and served as a commissioner on the New Mexico Water Quality Control Commission (WQCC), by designation of the state engineer. He loves the outdoors but his knees limit him to skiing and tennis – a lot of both. He is an enrolled member of the Cherokee Nation.



Walter Stern, Board Member, Albuquerque, NM

Walter Stern is a shareholder of Modrall Sperling law firm. He brings more than 35 years of experience providing representation, advice and counsel to businesses and individuals in their dealings with Native American tribes, nations, and Pueblos, and federal public land management agencies, including the Bureau of Land Management and the U.S. Forest Service. Walter's practice is focused on natural resources, energy and environmental law, including Native American and federal lands leasing, development, and related permitting, consultation, and environmental compliance efforts. Walter holds a B.S. degree in Forestry from the University of California at Berkeley; he graduated *cum laude* from Boston College Law School. Walter enjoys hiking, skiing and mountain bike riding that does not involve crashing on boulders.

NMLC ADVISORY BOARD



Anthony (Tony) Benson, Past Chair & Founding Board Member, Taos, NM

Tony is a rancher and a retired geologist who served as an Adjunct Professor at UNM-Taos and a member of the Board of Supervisors of the Taos Soil and Water Conservation District. He served as the first Chair of the NMLC Board of Directors from 2002-2004. He also served as Board member of the New Mexico Society for Range Management, New Mexico Association of Conservation Districts, BLM Resource Advisory Council, and the New Mexico Geological Society Foundation. Tony earned his B.S. and PhD degrees in geology from Ohio State University.



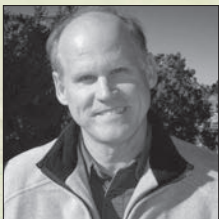
Sid Goodloe, Board Advisor, Capitan, NM

Sid has been owner-operator of the Carrizo Valley Ranch for more than five decades. He is a Board member of the Quivira Coalition and of the New Mexico Cattle Growers Association, a founding member of the New Mexico Riparian Council and an international livestock consultant. Sid and his wife Cheryl founded the Southern Rockies Agricultural Land Trust in 1998 and operated the organization until 2011 when they transferred their easements to NMLC and subsequently dissolved the organization. Sid has a B.S. in Animal Science and an M.S. in Range Science from Texas A & M University.



Elizabeth Richardson, Founding Board Member & Board Advisor, Los Angeles, CA

Elizabeth Richardson worked for Colorado Open Lands, a statewide land trust, for 10 years and served on the Board of the Colorado Coalition of Land Trusts for 12. In these positions, her responsibilities included the acquisition of conservation easements, Stewardship Program management, fundraising, communications and public relations. After moving, she continues to be actively involved by volunteering for the Southern California Open Space Council. Elizabeth holds a B.A. from Radcliffe College, a M.P.A. from University of Southern California, and an M.B.A. in Finance from University of Denver.



Jack Wright, Former Chair & Board Advisor, Las Cruces, NM

Jack has been a professor of geography at New Mexico State University in Las Cruces since 1990. He served as Chair of the NMLC Board of Directors from 2004 through 2011. He has consulted in the land trust field for 30 years and has designed more than 100 conservation easements in New Mexico, Colorado, Wyoming and Montana. Jack has earned three degrees in geography: a B.A. from the University of Massachusetts, an M.A. from the University of Montana and a PhD from the University of California at Berkeley.



John (Jack) McCarthy, Board Advisor, Santa Fe, NM

Jack McCarthy, a native of Taos, is an attorney practicing with the firm of Cuddy & McCarthy, LLP, in Santa Fe. He is Past President of the New Mexico State Bar and the New Mexico Bar Foundation, and has extensive experience on the boards of non-profit organizations. He holds a Bachelor of Arts degree from St. Benedict's College and a law degree from the University of New Mexico. Jack joined NMLC's board of directors in 2012, serving for six years before retiring in December 2018. He will now serve as a board advisor.

STAFF



J. Scott Wilber, Executive Director

Scott has more than 30 years of experience working in natural resource management, conservation and community development throughout the Rocky Mountain West and Latin America. He joined NMLC in 2004 as Conservation Director and was named Executive Director in 2006. Previously, Scott worked for The Trust for Public Land, Colorado Open Lands, The Nature Conservancy, the Tropical Forest Foundation, and the U.S. Forest Service. He holds a B.S. in Forest Management from Northern Arizona University, and a M.A. in Geography and Latin American Studies from the University of New Mexico.



Ron Troy, Southern New Mexico Project Manager

Ron joined NMLC after spending seven years focused on protection and restoration of Chinook salmon and steelhead habitat for The Nature Conservancy in Salmon, Idaho. Ron's previous experience also includes fishing and whitewater guiding, wildlife research, and operating a small farm and ranch operation in Hondo, NM. Ron holds a B.S. in Finance from University of Idaho, a B.S. in Fish and Wildlife Science from New Mexico State University, and a M.S. in Biology with an emphasis on Ecological Restoration from Idaho State University. Ron is based in Silver City helping NMLC establish a greater presence in southern New Mexico and southeast Arizona.



Connor Jandreau, Conservation Project Manager

Connor Jandreau has a background in conservation biology and conservation partnerships in the intermountain west, Canada and East Africa. He holds a B.A. in studio art and a B.S. in fish, wildlife and conservation biology, both from Colorado State University, and a M.S. in Natural Resource Management from the University of Manitoba, Canada. He is especially interested in the new face of collaborative conservation taking flight across the West. As an avid outdoorsman, he also revels in the chance to explore New Mexico's backcountry, whether with skis, boots, bikes or boats.



Alex Silver, Stewardship Coordinator

Alex Silver joined NMLC in 2018 as the Stewardship Coordinator, working to expand the land trust's monitoring and stewardship program. A graduate of the School of Natural Resources and Environment at the University of Michigan, Alex's studies focused on terrestrial ecology and related social issues. His experience includes work with the Headwaters Land Conservancy and the Department of Natural Resources of Michigan. Alex is inspired by dynamic land-use planning that integrates the built environment with open spaces. Alex loves travel and outdoor exploration, the humanities, and discovering the uniqueness of New Mexico and the Southwest.



Sandra Halpin, Communications & Marketing Manager

Sandra's career spans more than 35 years in communications and marketing, ranging from USA Today, People and Ms. Magazine, to founding an alternative weekly newspaper in rural Wisconsin. Sandra also spent 5 years working with ranchers and landowners as Communications Manager for the Center for Holistic Management (Allan Savory) in Albuquerque before moving to Santa Fe to launch her own real estate brokerage and earn a Bachelor of Fine Arts degree from the Santa Fe University of Art & Design. Sandra's deep love of the land is one reason she has made New Mexico her home for more than 20 years.



Barbara Godbey, Office Manager

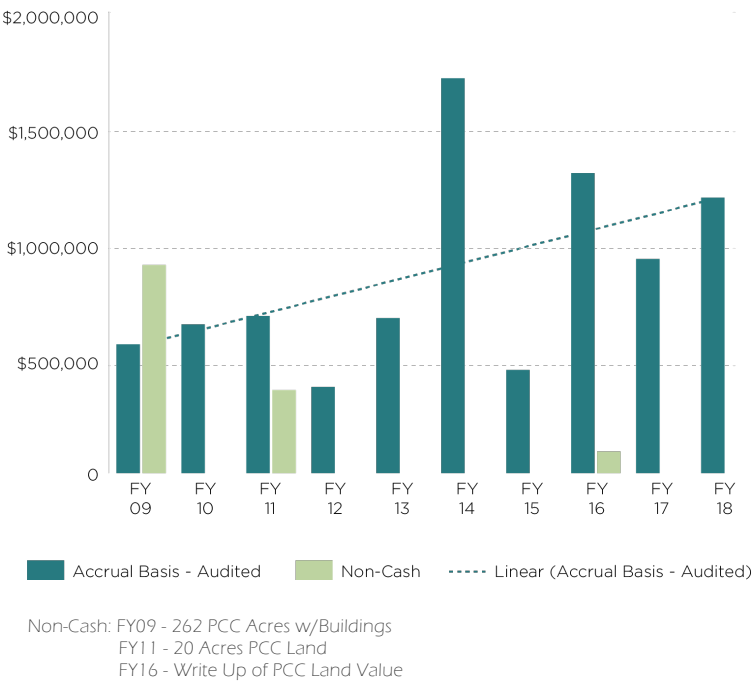
Barbara is a long-time New Mexican who cherishes the unique landscape of her native home. She has more than 20 years' experience with office, data, and finance management. As Office Manager, Barbara wears many hats: she manages the financials, creates efficiency systems and handles all administrative operations. She also supports our conservation, development and communications departments, coordinates the annual audit, and trouble shoots computer issues. She enjoys her family (especially her young grandson), her dogs, gardening, camping, cooking (she makes a mean pumpkin cheesecake!) and healthy living. Barbara is glad to be part of NMLC's efforts to preserve New Mexico's land heritage.

FINANCIALS

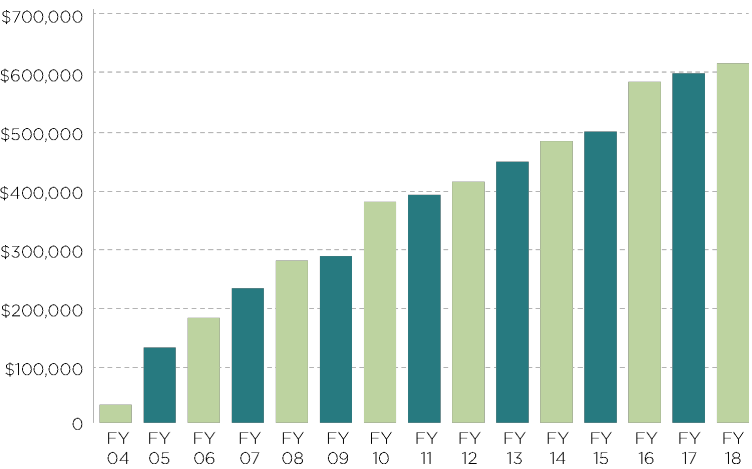
Statements of Financial Position – June 30, 2018 & 2017

Assets	2018	2017
Cash	\$ 283,872	\$ 265,937
Promises to give	469,792	680,846
Land, building and equipment	1,249,024	1,236,781
Stewardship fund	610,851	593,650
Other Assets	21,845	9,597
Total Assets	\$ 2,635,384	\$ 2,786,811
Liabilities	40,680	216,407
Net Assets	2,594,704	2,570,404
Total Liabilities and Net Assets	\$ 2,635,384	\$ 2,786,811

Income Growth



Stewardship Fund Growth

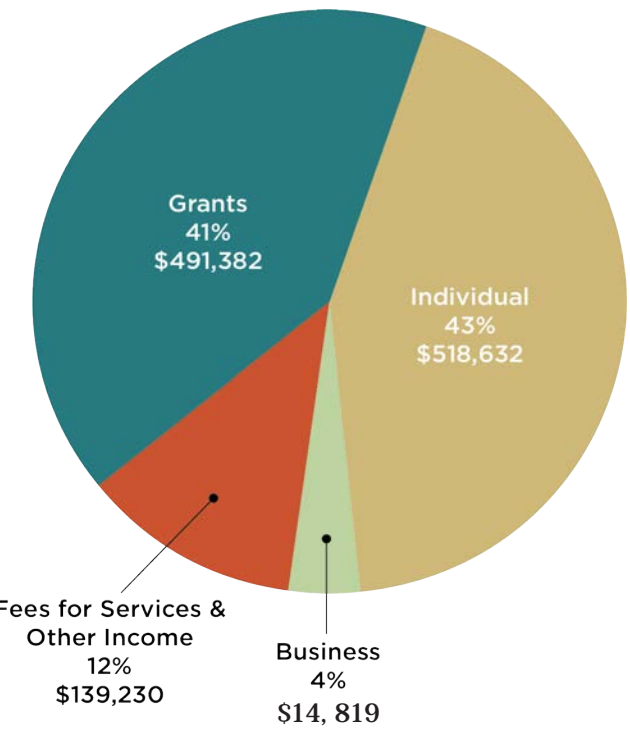


Source of financial data: FY2018 financial audit prepared by Swain & Grieco LLC. Copies of NMLC's annual financial audit reports and federal tax returns are available on our website: www.nmlandconservancy.org

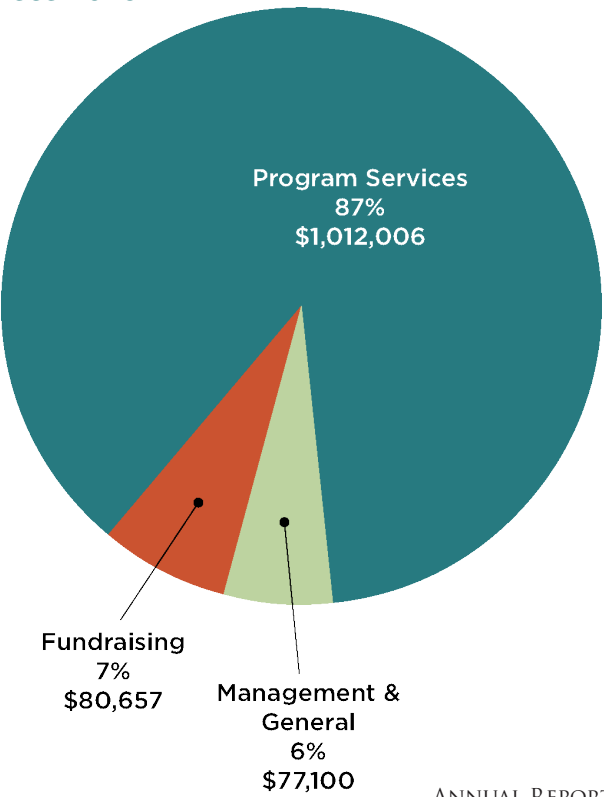
Statements of Activities 2018 & 2017

	2018	2017
Support and Revenue		
Landowner/Project Contributions	\$ 287,500	\$ 91,000
Grants	491,382	620,763
Individual Contributions	261,132	162,654
Business Contributions	14,819	34,824
Fees for Services & Investment Income	139,230	19,377
Total Support and Revenue	\$ 1,194,063	\$ 928,618
Expenses		
Program Services	\$ 1,012,006	645,146
Management and General	77,100	73,742
Fundraising	80,657	111,730
Total Expenses	\$ 1,169,763	\$ 830,618
Change in Net Assets	24,300	98,000
Net Assets, Beginning of year	\$ 2,570,404	\$ 2,472,404
Net Assets, End of year	\$ 2,594,704	\$ 2,570,404

Revenue 2018



Expenses 2018



DONORS —Donations from January 1, 2018 through January 31, 2019.

Pioneer (\$25,000 +)

Anonymous
Josiah Austin
CS Ranch, Inc
Department of Defense
Fund to Protect NM Air, Water and Federal Public Lands, Santa Fe Community Foundation
Brooke Gamble
John Horning & Theresia Flanagan
MacKenzie & Lorelee Hunt
Wayne Kirkby
Lineberry Foundation
Moore Land & Cattle Co
The Trust for Public Land
Garrett Thornburg
Turner Foundation Inc.
Union Land and Grazing Company
US Fish & Wildlife Service
Lynn Wilcox #

Andrew L Brill
Hamilton B Brown
Susan Coe Brown
Century Bank
Ed Chappelle
Deer Canyon Preserve HOA
Sayre & John Gerhart
Hanuman Foundation
Leo Harris & Ann Simms
Sam & Betsy Holdsworth
La Montanita Food Co-Op
Louise Arnold Maddux Foundation
Elizabeth Richardson
The Anya and Henry Bagley Charitable Trust
The Conservation Fund
The LEF Foundation
Zia Trust #

Friend (\$1 - \$999)

Paul Abrams, in Honor of Scott Wilber
Marsha & Phil Ahrenkiel
Charmay Allred
AmazonSmile Foundation
Edward Ames
Stephanie Anabo, in Memory of Fred Stillger
Judith Anderson
Keith Anderson & Barbara Lenssen
Robert Anderson
Anonymous (9)
Janice Arrott, in Memory of Fred Stillger

Allan Beezley
Anthony Benson
Gail & Joel Bernstein
Bruce Besser
Mary Beth Bigger, in Honor of Harold Odum
Edward & Cecilia Binkley
Kevin & Joan Bockman
Bruce & Cynthia Bolene
Charles Bonfanti
Jeff Boyd
Barrett Brewer
Larry Brown, PhD
Pamela Bryant
Ted Buchanan & Sally Corning
Lisa Burns
Rochelle Byars
Gayle & Andrew Camden, in Honor of Brook Gamble
James Carey
Charles Case & Pamela Culwell
Scott & Megan Chaskey
Susan Clair
Marie Coburn
Pitchfork Ranch, AT & Cinda Cole
Brian Cooke
Jeffrey Davis
Linda M Davis
Christopher Dehler, in Memory of John C Dehler
Margaret Detwiler
Dave DeWitt
Matthew Dixon
Raymond Dolan

Richard Ducotey & Rebecca Summer
David & Anita Dunmar
John R Dupuy
Don Fanslow
Martha Anne Freeman
Jameson French
Martin Garhart, in Memory of Fred Stillger
Trish Geels
Tom & Jane Gillentine
Sid & Cheryl Goodloe
Jay & Lynn Gould
Grant County Community Foundation
Torie Grass
Sterling Grogan & Anne Watkins
Shelby Hallmark
Candis Harbison
Ada Haunschild
Virginia Hawthorn
Willard Heck, Jr
Robert Hiller
Cathy Hope
Claudette Horn
Jessie W & Llewellyn Howland III
Mollie Huppert
David Johnson
Kurt Jorgensen & Associates LLC
JourneySantaFe
JustGiving
Heather Karlson & Bill Leeson
John & Susan Kelly
Daniel Klein & Robbyne Jones

Kathleen Koehler
Paul & Ruth Kovnat
Jennifer Kruger
Colleen Kuehl, in Memory of Larry Bruce Hyde
Woody & Nandini Kuehn
Frederick Lamont
Allen Lewis & Carla Aragon
CA Liska
Kimberly MacLoud
Jennifer Renee Martinez & Gregory Ridgley
Tyler M Mason
Donald Mawhinney
John & Kathy McCarthy
Patricia McCulloch
Matthew McQueen
Lanette Meister
Carrie & Stephen Miller
Paul & Genevieve Mitchell
Joseph Montoya
Allan & Frances Moorhead
Evelyn Moran
Letitia Morris
Virginia Mudd & Clifford Burke
Blair Nodelman
Gerald Ortiz Y Pino
Margaret O'Toole

Melinne Owen & Paul Giguere
Dianne Parker
G. Stuart Patterson & Elinor Schrader
Morrill & Ginny Peabody
Christy & Paul Pino
PNM Foundation
Teri Randall
Edward & Melanie Ranney
Nancy Ranney & David Levi
Robert Rasmussen
Gerald Richardson
Luis & Veronica Rigales
Elizabeth Roghair
David Rose & Ceil Murray
Pam Roy
Christopher Rustay
San Pedro Creek Estates HOA
Mary Anne and Al Sanborn
Bruce & Leslie Schmick, in Honor of Jim Winder
Mark & Barbara Schmidt
R. Schnelker
Delia Scholes & Ed Newbold, in Memory of Robert & Kathryn Scholes
Shirley B Scott, MD
Margaret Sears
Dorothea Siedentop

George & Patricia Simon
Allyson Siwik
Daniel Smith
Jon Spar
Betty Spence
Walter Stern
Suzanne Stone
Dennis Switzer
Alexandra Tager
Meredith Tallas
The Nash Foundation
Steve Thompson
Polly J Townsend
Gerald Troy
Tom Troy
Ron & Yvette Troy
Two Casitas, In Honor of Jody Wilson
Kenneth & Eunice Vellon
Alan Webber & Frances Diemoz
Charles Wellborn
Paula Wells & Jill Mulder
Joseph Wexler
Kelly White
Anita Williams
Marilyn Wilmerding
Thomas Wood & Anne Ramenofsky Wood #

A Big Thanks to Our Partners

AZ Department of Game & Fish
Chama Peak Land Alliance
Conservation Resource Center
Denver Zoo
Ducks Unlimited
Forest Trust
Grant County Commission
Hermit's Peak Watershed Alliance
High Plains Grasslands Alliance
Land Trust Alliance
NM Department of Game & Fish
NM Department of Transportation
NM Energy, Minerals & Natural Resources Department
NM Food & Agriculture Policy Council
NM Office of Natural Resources Trustee
NM Taxation & Revenue Department
NM Tax Credit Alliance
NM State Forestry Division
Playa Lakes Joint Venture
Quivira Coalition
Rio Grande Agricultural Land Trust
Rio Grande Return
Riverbank Ecosystems
Santa Fe Conservation Trust
Silver City Trails & Open Space Committee
Taos Land Trust
The Conservation Fund
The Nature Conservancy
The Trust for Public Land
Upper Gila Watershed Alliance
U.S. Army – White Sands Missile Range
U.S. Fish & Wildlife Service
U.S. Natural Resources Conservation Service
Western Landowners Alliance #

Thank you!

Please report any errors or omission to: admin@nmlandconservancy.org. Thank you!

In Memory of Moo Thorpe



This year, NMLC lost a longtime supporter and friend, Moo Thorpe, who passed away in June 2018. Moo served as a board member from 2009 until January 2018, several of those years as board Treasurer. Moo's passion for the land, combined with her professional experience and expertise, helped NMLC expand its capacity and achieve greater conservation successes during her tenure. She will be greatly missed.

In lieu of flowers, Moos' wishes were that donations be made to the New Mexico Land Conservancy. To date, NMLC has received more than \$10,000 in donations in memory of Moo from her loving friends, family and businesses associates. NMLC wishes to express our deepest gratitude to these donors (listed right).

SPECIAL THANKS

Rick & Kathy Abeles
Betsy Armstrong
Jeff & Mary Brannen
Ellen Callanan
Laura Caruso & Joe Burleson
Adam & Sarah Cifu
Ann & Mark Crouse
Margo Cutler
Dottie Diamant
John & Lucy Draper
Beverly Fitzgerald
Jennifer Gallagher
Jeffrey Harakal
Chris Haynes
KT Helin-Glick
Jane Holahan
Fred & Katherine Jahnig
Sandy Koch
John & Kathy McCarthy
The Metropolis Family
David & Judy Neunuebel
Ariel Patashnik
Elizabeth Richardson
Thomas Romer
Elise & Paul Schmidt
Cris Schonefeld
Paula Summar
Emily Talbot
The Anya and Henry Bagley Charitable Trust
Penelope Vasquez
John & Renate Zinn #

New Mexico: Our Mission. Your Legacy.

When you include the New Mexico Land Conservancy (NMLC) in your estate plans, you are making a gift for future generations to enjoy the unique and special places we all cherish. A planned gift, like permanently protected land, is a lasting contribution to ensure that NMLC has the resources to conserve and steward these special places. Making a planned gift to our organization may provide you and your family with valuable tax benefits. Gifts to NMLC are not subject to gift or estate taxes. There are several ways to include NMLC in your estate plans; for example, bequests and gifts of retirement plans, life insurance policies and real estate.

Please contact your financial planner to discuss options that meet your financial planning needs and philanthropic vision.



Photo courtesy of Trout Stalker Ranch, Chama, NM

PO Box 6759
Santa Fe, NM 87502
505.986.3801

info@nmlandconservancy.org
www.nmlandconservancy.org

NEW MEXICO
LAND CONSERVANCY

Conserving Land. Preserving Heritage.